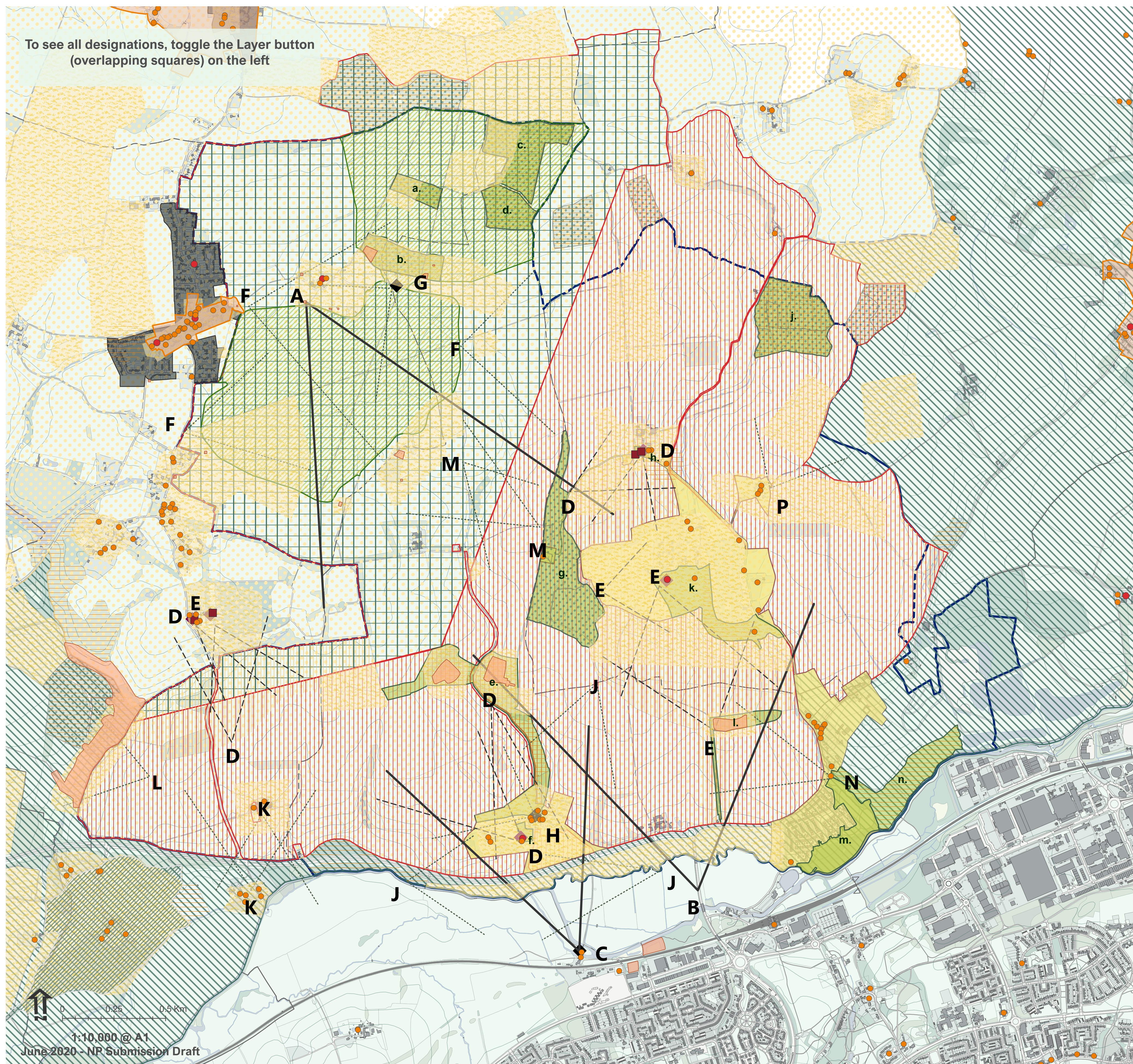


Gilston Area Neighbourhood Plan - Key Designations

Submission Draft (June 2020)



Document prepared by the Hunsdon Eastwick and Gilston Neighbourhood Plan Group with the technical support of URBAN Silence and Gilston Neighbourhood Plan Group.
Maps subject to Ordnance Survey licensing, provided by Eastwick and Gilston Parish Council under licence from the Ordnance Survey in order to fulfil its public function to make available public domain information. © Crown copyright and database 2019 - Landscape and Environmental data: © Natural England 2019 from <http://naturalengland.defra.gov.uk> - Heritage Designations © Historic England 2019 from <http://www.historicengland.org.uk> - East Herts Designations © EHDC 2019

Neighbourhood Plan Designations

Important Views

- Long Distance View
- View to / from Key Heritage Assets
- View of Open Countryside

Distinctive Assets

- ◆ Church
- ◆ Manor House
- ◆ Other Asset

Key Landscape Designations

- Designated Local Green Space
- Community Boundaries
- Countryside Park
- Sensitive Historic Setting
- Ancient Woodland (Natural England)
- Wildlife Sites (District Plan)

Heritage Designations

- Areas of Archaeological Significance (District Plan)
- Historic Parks and Gardens
- Conservations Areas (District Plan)
- Scheduled Monuments (Historic England)
- Listed Grade I
- Listed Grade II*
- Listed Grade II

District Plan Policy Designations

- Village Development Boundary (Group 1)
- Village Development Boundary (Group 2)
- Site Allocation (Policy GA1)
- Community Trust Open Space Land (Policy GA1)
- Green Belt (East Herts only)
- Rural Area Beyond the Green Belt
- Neighbourhood Plan Boundary
- Parish Boundaries

Designated Local Green Space

- a. Eastwick Wood
- b. Black Hut Wood
- c. Lawns Wood and Moat
- d. Queens Wood
- e. Eastwick Valley and Eastwick Hall Corridor
- f. St. Botolph's Churchyard
- g. Home Wood
- h. St. Mary's Churchyard
- j. Golden Grove
- k. Gilston House Parkland and Lake
- l. Avenue and Chase
- m. Terlings Parkland
- n. Fiddlers Brook / Lowland Fens

Important Views

- A. Long distance view from the Hunsdon Plateau
- B. Long distance view from Harlow
- C. Long distance view from Parndon Mill
- D. Views to and from the churches and churchyards
- E. Views to and from the Gilston Park House and Hunsdon House
- F. Open view over Hunsdon Airfield
- G. Open views from the Airfield Memorial and hangars
- H. Open views out from Eastwick Road and Memorial
- J. Open views towards Eastwick from south
- K. Rural views to and from Hunsdon Pound
- L. Open views towards Hunsdon Brook Fishponds
- M. Open views towards and from Home Wood and Hunsdon
- N. Open view from Terlings Park and Fiddlers Brook
- P. Open view from the path by Channock Farm